



Jewish Residents of Leisure World

Silver Spring, Maryland

NOVEMBER 2019

President: Lyle Wolinsky 301-325-2600
lwolinsky@gmail.com

CHESHVAN - KISLEV 5780

Newsletter Editor: Bernice Cohen 301-598-0192
bernicecohen1@gmail.com

PLEASE VISIT THE JRLW WEB SITE - <http://jrlwmd.org>



LYLE WOLINSKY

PRESIDENT'S MESSAGE

THANK YOU!

How wonderful to have had such experienced and talented clergy for our Rosh Hashanah and Yom Kippur services. Thank you to our Rabbis and Cantors for our Reform and Conservative services. Our volunteer Religious Committee headed by Janet Lazar and Gerry Sommer and Neil Ross deserve a big thank you for the hard work of following up on all the details. Also, many volunteers were active in making the services so successful. Special thank you to Matty Feldman for all the work that he does to make sure the services are great. And Yosher Koach to all participants.

You may have noticed the beautiful new permanent Yizkor booklet with the picture of Jerusalem on it. This is the new booklet we will use each Yizkor service instead of printing a new book each year. Also, thank you to those members who honored their loved ones with a tribute in the memorial booklet. We have plenty of extra copies if you would like to share them with your family. Just give me a call or email me for an extra copy.

CONTINUED ON PAGE 2

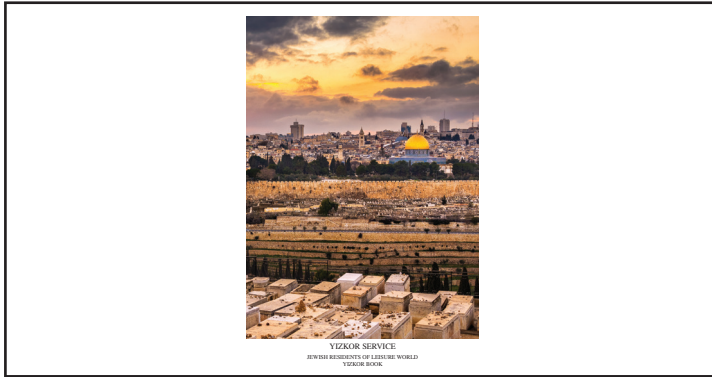
NOVEMBER 2019

- 1 Fri – Ira Weiss CH I 10:00 am
- 1 Fri – JRLW Shabbat Service Interfaith Chapel 7:30 pm
- 2 Sat – Study w/Rabbi Samber CH II 9:15 am
- 2 Sat – Malava Malka CH II 6 pm
- 5 Tue – JRLW Board CH II 7:00 pm
- 6 Wed – JWV Board CH I 11:00 am
- 6 Wed – Na'Amat Meeting CH I 11:30 am
- 6 Wed – Hadassah Board CH I 7:30 pm
- 8 Fri – Ira Weiss Class CH I 10:00 am
- 9 Sat – JRLW Shabbat Svc CH II 9:15 am
- 10 Sun – JWV Brunch Clubhouse I 10:00 am
- 10 Sun – Kristallnacht Observance CH II 7:30 pm
- 13 Wed – JCC Concert CH I 1:00 – 2:00 pm
- 13 Wed – Hadassah Fashion Show CH 2 – 2:00 pm
- 15 Fri – Ira Weiss Class CH I 10:00 am
- 16 Sat – Study w/Rabbi Samber CH II 9:15 am
- 17 Sun – JRLW Brunch CH I 10:00 am
- 18 Mon – JCC Lecture CH I 10:30 am – 12:00 Noon
- 18 Mon – Hadassah Study Group CH I 1:30 pm
- 19 Tue – Na'Amat Board CH I 10:30 am
- 23 Sat – Study w/Rabbi Samber CH II 9:15 am
- 26 Tue – JRLW/CoA Movie CH II Activities Room 1:30 pm
- 26 Wed – Na'Amat Book Club
- 27 Wed – Interfaith Thanksgiving Service – Interfaith Chapel
- 28 Thu – THANKSGIVING
- 30 Sat – Study w/Rabbi Samber CH II 9:15 am

CHANUKAH PARTY 2019 FORM ON PAGE 4

PRESIDENT'S MESSAGE

CONTINUED FROM PAGE 2



Thank you to Bob Fenichel and the Sukkah builders for the great job they did in putting up the Sukkah and taking it down. Also, thank you to the Sukkah committee for planning out the many days of events in the Sukkah. I know a lot of time and effort went into making sure that Sukkot was a success.

It was unfortunate that 75 people could not get tickets to the Daryl Davis Sunday brunch. We need a larger banquet room for the JRLW brunches to accommodate the large membership.

Our fabulous Sunday brunch continues on November 17, at 10:00 am. Buy your tickets now for Richard Bell - How Hamilton Remixes History and Show Biz, a fascinating comparison of the hit musical and the real Hamilton history.

On December 15, enjoy a great bunch and a musical performance by the talented Cantor Wendy Gonzales called "Songs of Light." This is a real treat. Please order your tickets early for the Sunday brunches by sending a check for \$14 for members or \$18 for nonmembers to Jerry/Shirley Gordon: 15311 Beaverbrook Court, Apt. 3A, Silver Spring, MD 20906.

We have some new events in the plans for next year. Our Education Committee, under Chairperson Becky Siman, has new programs and travel in process.

I am proud to announce that we receive new members every week. We currently have 752 members. Thank you to all the current members, the new members and the Life members who have reenergized JRLW and the Jewish Community in Leisure World.

JRLW BRUNCH

Karen Krausen & Joni Sommer

On Sunday, November 17, we will have the JRLW brunch at 10:00 am in the Crystal Ballroom in Clubhouse 1.

Dr. Richard Bell, an Associate Professor of History at the University of Maryland, will present, "How Hamilton Remixes History and Show Biz." He will help us understand what this amazing production gets right—and wrong—about Alexander Hamilton, the American Revolution, and the birth of the United States, and why it all matters.

Mail your check, made out to JRLW for \$14.00 for members and \$18.00 for non-members per person, to Shirley and Jerry Gordon, 15311 Beaverbrook Court, #3A, Silver Spring, MD 20906. **Remember that your check must be received one week prior to the brunch in order to be able to attend.** See you at the brunch!



WELCOME MANDY NIAD

Lyle Wolinsky

We would like to welcome Mandy Niad, the new Assistant Director at the Garden of Remembrance Memorial Park (GoR) in Clarksburg.

GoR, is the only non-profit, multi-congregational Jewish cemetery in the Washington area. It provides members of Orthodox, Reform, Reconstructionist and Conservative congregations -- and unaffiliated Jews -- with the thoughtful support they need in difficult times.

Mandy will be acting as GoR's liaison and resource for the Jewish community here at Leisure World. Please feel free to reach out to her with any questions.

mandyn@gardenofremembrance.org

301-428-3000

<http://www.gardenofremembrance.org>

NOVEMBER RELIGIOUS SERVICES



Friday Evening Conservative Shabbat Services will be held on Friday, November 1, at 7:30 pm, in the Interfaith Chapel. Rabbi Gary Fink will conduct the Services. Ed Laskin will lead our choir.

On Saturday morning, November 9, at 9:15 am, in Clubhouse II, we will hold **Shabbat Services**. The Torah Portion will be Lech Lecha. There will be a Kiddush following Services. Come for Services and stay for a nosh and shmooze with friends.

Rabbi Samber will lead a short service and Torah study on Saturdays, November 2, 16, 23 and 30 at 9:15 am, in Clubhouse II. All are welcome.

On Saturday, November 2, we will hold **Havdalah and Malava Malka** in Clubhouse II at 6:00 pm.

We will hold a **Kristallnacht** observance on Sunday, November 10, in Clubhouse II.

There will be a **Community Thanksgiving Eve** Service in the Interfaith Chapel on Wednesday, November 27, at 6:00 pm.

WE need help in setting up for Oneg Shabbat on Friday evening and for Kiddush for Saturday morning Services. Please say you will be able to help our members who make our Shabbat Oneg and Kiddush so nice. If YOU can help, please call Lyle Wolinsky at 301-325-2600. Thanks.

NOTICE: THE DEADLINE FOR THE DECEMBER NEWSLETTER IS NOVEMBER 10. ARTICLES SUBMITTED AFTER THAT DATE WILL APPEAR IN THE JANUARY NEWSLETTER.

CONTRIBUTIONS

Carol Wendkos

With the beginning of a new year, we can be thankful for aliyot we received during a service or remember those who are no longer with us or are ill. We can also honor those celebrating birthdays, anniversaries or graduations. We have several funds at JRLW where members contribute and help maintain our organization. Here are two of the funds:

The Torah Fund is used to maintain and repair the Torahs used by our congregation. In some cases, the fund may be used to purchase a used or new Torah when necessary. Acknowledgements of donations of \$25 or more are sent to the recipients and appear in the bulletin. Contributions should be sent to:

Carol Wendkos
14805 Pennfield Circle (212)
Silver Spring MD 20906

The Prayer Book Fund provides for the purchase of a prayer book in honor or in memory of someone. A special label is put in the siddur and an acknowledgement is sent to the recipient. A minimum donation of \$25 is accepted. Acknowledgements of donations of \$25 or more are sent to the recipients and appear in the bulletin.

Contributions should be sent to:

Janet Lazar
15311 Beaverbrook Court, #1B.
Silver Spring MD 20906

NEWSLETTER STAFF

Bernice Cohen – Editor
Fran Feder
Shirley Griffin
Shirley Rosenhaft
Roz Rosenthal
Lyle Wolinsky - Business Mgr.

JEWISH RESIDENTS OF LEISURE WORLD



CHANUKAH PARTY



Monday, December 23, 2019 at 2:30 pm

Clubhouse 2, Activities Room

Join us in celebrating Chanukah at Leisure World. This festive afternoon will feature our own Cantor Michael Kravitz, who will lead us a meaningful Chanukah Program along with the singing of Chanukah songs. Enjoy latkas, apple sauce, sour cream, and cold beverages. The Chanukah Party will be followed by the traditional Lighting of the Leisure World Menorah in Clubhouse 2. Jelly doughnuts (Sufganiyot) will be served after the Menorah lighting for all to enjoy.

Cost is \$5 per person.

There is limited seating, no walk-ins, and no cash accepted at the door. No Reserved Seating. Checks should be made payable to JRLW. The deadline for receipt of reservations is **December 10, 2019**.

Questions should be directed to Phyllis Rand 301-871-1515, email: bubbyp2@gmail.com

Please make reservations by completing the form below and mailing it in with your payment to: Phyllis Rand, 15107 Interlachen Drive, #307, Silver Spring, MD 20906.

JRLW CHANUKAH PARTY – Monday, December 23, 2019 at 2:30 pm Clubhouse 2, Activities Room

Name(s) _____

Address _____

Phone Number _____

Email of main contact _____

Number of People attending _____

Amount Enclosed (\$5 per person) _____

NA'AMAT NEWS

Gladys Blank

Every day, new Na'Amat Israel President Hagit Pe'er commutes 1.5 hours each way to and from her office in Tel Aviv. She uses the three hours in the car to work on how to better serve Na'Amat's 300,000 members in Israel, offering them technological schools, youth villages, legal bureaus, women's centers and domestic violence centers.

Here in Silver Spring, Na'Amat is also doing what it can to make our members aware of the work we do to enhance the image of Na'Amat here and in other parts of the world. Raising money for a variety of Na'Amat causes is one way to do our part.

A special treat is in store for one and all at our November 6 meeting. We will be showing a wonderful film called HEADING HOME. This is the tale of TEAM ISRAEL. Admission is \$5.00 at the door, cash or check payable to Na'Amat.

Another popular event is scheduled for Tuesday, December 10 - our annual Cards, Mah Jongg and Games afternoon. The cost for this event is \$8.00 per person and includes delicious homemade kugels for a special treat.

WAIT! There's more. We will have a very special evening at the Signature Theatre for a performance of OL' BLUE EYES: FRANK SINATRA on Wednesday, January 15, 2020. The cost for this evening is \$69.00, which includes admission to the show and transportation. Send your check for \$69.00 to Carol Mund, 15101 Interlachen Drive, #724, Silver Spring MD 20906, by December 15.

We look forward to seeing you and your friends at all of our happy events coming up this Fall. Join Na'Amat and be in on all the pleasant activities we are planning.

THINK ISRAEL, THINK NA'AMAT!!

GOOD AND WELFARE

Thanks to our Religious Committee and our clergy for meaningful High Holiday services. A special thanks to Barbara Firestone for her very special Yom Kippur reading. Although Cantor Mike Kravitz had broken his ankle and had to perform sitting down, he did a masterful job!

The Yiskor Book Committee worked hard to produce the lovely Yiskor prayer and remembrance booklets that we used this year. From here on, we will only have to purchase the remembrance booklets each year, as we will use the same prayer booklets each time Yiskor is recited.

Did you happen to see the write-up of our own George Kessler in the Washington Jewish Week? Nice article! Right after Yom Kippur, Marilyn and George left for Israel to await the birth of another great grandchild.

We send our continued wishes for a speedy return to good health to Allan Firestone.

Mazel Tov to Janet and Sidney Lazar on their 56th wedding anniversary!

Thanks to the hard work by our Membership Committee, JRLW now has more than 750 members. Yasher koach for a job well done!



THE COMMITTEE WHO WORKED HARD PUTTING UP OUR SUKKAH!



JEWISH DISCUSSION GROUP

Jerome "Jerry" Cohen

The group's next session will be held on Sunday, December 22, 2019, at 10:30 am, in the **Clubhouse 1** Baltimore Room. Back by popular demand, will be guest moderator, Bernie Zycherman.

Due to annual scheduling conflicts with the Thanksgiving holiday weekend, the group will no longer hold November sessions.

The move to Clubhouse 1 as of the September 22nd session, resulted in the largest turnout to date and packed the Baltimore Room. The session featured Rabbi Gordy Fuller discussing the book he co-authored, *Coping with Adversity: Judaism's Response to Illness and Other Life Struggles*.

The participants of the group are encouraged to offer suggestions for featured speakers. Participants should consider discussing with the moderator, in private, if they care to do a short subject presentation of interest to the group. Individuals who may want to serve as guest moderators to substitute from time-to-time in leading the group's monthly sessions are encouraged to contact the moderator as well.

JDG invites everyone to attend these free 4th Sunday morning discussion group sessions held at Clubhouse 1 from 10:30 am to noon. For additional information or to have your email address added to the monthly notification list, please call or email group moderator, Jerry Cohen at 240-970-5024 or jcohen@jccbb.com.

WE REMEMBER

Carolyn Gross.

Beverly Cohen.

Arthur Podolsky.

Solomon Danzig.

Ronald L. Block.

Roberta Carin.

**MAY THE MEMORY OF OUR LOVED ONES
BE AS A BLESSING.**

TZEDAKAH, KIDDUSH AND ONEG DONATIONS

For information about Tzedakah, Oneg or Kiddush donations, please call Susan Weiss at 301-460-6030. Checks should be made out to JRLW and mailed to Susan Weiss, 3739 Glen Eagles Drive, Silver Spring, MD 20906.

TZEDAKAH

Jody Rosenberg and her mother, Linda Rosenberg, in memory of her father and husband, Howard Rosenberg who passed away on September 8.

Carole Jason to Cantor Michael Kravitz and his wife, Cheryl, sending them both get well wishes.

Barbara Cronin made a donation to JRLW with get well wishes to sister-in-law Beverly.

Susan and Jonas Weiss to Cantor Michael Kravitz and his wife, Cheryl, wishing them both get well wishes and a New Year filled with blessings.

Sheila Chodorov in memory of Carolyn Gross.

Charlotte Bardack in memory of her husband, Larry Bardack, and wishing everyone a L'Shana Tova.

Correction: A donation in our October newsletter was incorrectly listed. It should have read, 'Henny and Harold Steinman to Marvin Levine in memory of his wife, Shirley P. Levine'. We regret the error.

URGENTLY NEEDED: One or two volunteers (preferably male) to serve as back-up, as needed, to Ted Hyman for Shabbat Eve services once a month to set up the Interfaith Chapel. Please help.

Call Ted Hyman, 301-438-3141 Janet Lazar, our Religious Chairman, 302-598-4066.

D'VAR TORAH

Sid Sussan

Ed note: At our Shabbat Service, here in Leisure World, on October 12, Sid Sussan gave the D'Var Torah. His words about the Portion were so powerful, that we would like to share them. Thank you, Sid.

Moses' opening words of parshah Ha'azinu, written in poetic form -- "Give ear, O heavens, let me speak" -- give a sense of a "call to order". It was probably no easier then than now to get a large group to pay attention to what is about to be said.

Sometimes we are so busy talking, so busy with our own important business or just our own importance, that we aren't listening to any message. And I'm not so sure it was so different back in the day, so to speak. Have people really changed?

The poem warns, instructs and gives hope. In the end G-d's people will not be forgotten. It has been suggested that we might understand Moses' poem as urging us to learn from the past; that the past is not necessarily prologue.

A great hope should be that we are not doomed to repeat the errors of the past either as individuals, communities, or nations – although sometimes we seem determined to do just that. I'd say: Consider the past, but don't feel that we are stuck in it. Let us hope that we can evolve to do better both collectively and personally.

I would suggest, as others have, that Moses was encouraging the Children of Israel to understand the potential for change in every generation. Remember that "t'shuvah", the notion of repentance or return, implies change.

Rabbi Shmuel Bornstein, a Hassidic rabbi who lived in Poland in the late 19th century, believed that we should reflect on both the faults and achievements of those who came before us, and ask ourselves if we've really worked on improving on the faults and living up to the achievements.

No one said any of this was going to be easy work.

It is hard work. It is difficult to admit error. Not so many years ago, Rabbi Yael Splansky offered these thoughts: It has been said that in the days of the Temple, relieving guilt and sin may have been simpler. Religion gave an easier definition of right and wrong and a physical mechanism – the sacrifice – to address matters of sin and guilt. Bringing a sacrifice in expiation of a misdeed helped remind a person of a better self. As the rabbi saw it play out, the petitioner might have said: "I want to be perfect but I am not. I can try to do better, to be a better person. Please accept my offering and release me from my guilt." Perhaps these were just simpler people and simpler times. Perhaps.

Today, we can be introspective, and reflective; offer apology, prayer, and charity; and, perhaps the most important and most overlooked, demonstrate the desire and the ability to make change. My observation: It's relatively easy to pray if we so choose or make a charitable contribution even if it may no longer be tax deductible; it's somewhat more difficult to apologize, particularly if it's a sincere heartfelt apology; but apparently it's most difficult to change one's ways even though this may be most beneficial.

I hope that, as Jews, we are never "stuck" spiritually and that we avail ourselves of the possibility of change, growth, forgiveness, reconciliation, and return to our better or even best selves. All these can be seen as elements of teshuvah, or "repentance".

Recently, at our Shabbat mini-service, we discussed the notion of rejecting changes in behavior just because change was too difficult. We spoke of building on small, progressive, incremental steps, going part of the way and accepting help to complete the rest of the challenge. Remember, we are not perfect people and perfection should not be our expectation.

One vehicle for personal change, particularly germane to the parshah, is listening – the counterpart to Moses' speaking. Moses' charge to the assembled was intended to inform but, knowing the people and their past performance, perhaps he

D'VAR TORAH*CONTINUED FROM PAGE 7*

was also hoping for some active listening and real change.

A physician noted that of all the science and skill that a physician acquires, the seemingly simple act of listening is by far the most difficult. Proper listening enables one to comprehend the unique narrative of another human being. Waxing a bit philosophical, the physician concluded: "I have come to understand that the voice of God is all around me. God is not a silent God. God is speaking to me all the time. In everything. Through everyone."

As Rabbi Fink noted on this past Rosh Hashana, silence itself can be golden. G-d speaks in many ways but we won't know that if we don't make an effort to listen. It has been said that prayer is a two-way conversation, part of which is listening to G-d's reply. What's the harm if you listen carefully, and open yourself up to change? Just maybe, the result will be *tikun olam*.

In the end, let's not limit ourselves to the time we spend in the pews. Rather, to paraphrase a Garrison Keillor quote and put it into a Jewish context, "Anyone who thinks sitting in shul can make you a Jew must also think that sitting in a garage can make you a car." (Now to be clear, I am not suggesting that being at services is futile. I am suggesting that finding faith, repentance and comfort is a process that is not limited to being in a certain place at a certain time.)

We need to fight one of our strongest psychological enemies --inertia. Drop the excuses, or at least some of them for a start, and at least try to make amends and improve our lives and relationships.

Or to transfer the thought to a more secular, but equally apt, context, Robert Frost famously wrote that "home is the place where, when you go there, they have to take you in." We don't even need to knock at the door. The gate is open; the door is open. Let's step inside.

Shabbat Shalom.

**JEWISH WAR VETERANS
POST 567****Parks & Botanical Gardens Presentation**

Jerome "Jerry" Cohen

The next Jewish War Veterans Post 567 brunch will take place on Sunday, November 10, at 10 am, in the Clubhouse I Crystal Ballroom. Carl "Skip" Schoening, retired Associate Director of Montgomery County Department of Parks, will talk about the local award-winning parks and botanical gardens. Schoening was also the Chief of Horticulture and Forestry Division.

The delicious buffet brunch includes eggs, tuna fish, lox, bagels, latkes, blintzes, pastries, fresh fruit, coffee, juices, and more. Tables of 8 - 10 only may be reserved with payment for all tablemates and their names are to be included with the reservation. Open seating for all others will be in effect. Other expressed individual seating preferences will no longer be honored.

For the November brunch, please make your reservation check (\$14 per person) payable to "JWV 567", and mail it by November 1 to Andrea Goldberg, 15107 Interlachen Drive, Apt. 106, Silver Spring, MD 20906. Include a note with your name, address, number of persons attending, and the total amount enclosed.

Mark your calendars and be sure to attend the annual JWV/JRLW Friday night Veterans service on November 1, starting at 7:30 pm, in the Interfaith Chapel. This is the service which honors our Jewish Veterans who served in the United States military and the Jewish heroes who made the ultimate sacrifice.

The Post was honored to host Voices of Vets at its brunch on Sunday, October 13. They received a rousing welcome and a standing ovation from an appreciative crowd for their fine performance showcasing tunes from the 40's, 50's, 60's, as well as patriotic songs.

JEWISH WAR VETERAN

CONTINUED FROM PAGE 8

The members' business meeting is held the 1st Wednesday of each month from 11 am to 12:30 pm. All regular and patron members, and those who are considering joining are invited to attend. A new and faster paced meeting format has been implemented and all participants will be given an opportunity to offer their input and program suggestions.

For those who would like additional information, have questions about membership, would like to be added to Post 567's email notification and e-newsletter list or to make donations please contact Jerry Cohen at (240-970-5024) or (jcohen@jccbb.com).



NEW CLASSES

Djangolaya in Concert

Wednesday, November 13, 1:00 – 2:00 pm

Cost: \$8; \$10/Day of Concert

Back by popular demand, the Djangolaya band celebrates the music of Django Reinhardt, one of the greatest musicians of the 20th century. They play a wide range of music from swing to bossa nova to gypsy jazz to tango and more. The vocalist, an incredible chanteuse, and this wonderful band will captivate and delight you! ♥ Sweets will be served.

BATTLING FOR JEWISH RIGHTS IN THE U.S. SUPREME COURT

Special Guest Lecture by Nathan Lewin

Monday, November 18, 10:30 – 12:00 pm

Cost: \$8; \$10/Day of Lecture

Attorney Nathan Lewin began his legal career clerking on the United States Supreme Court and serving in the John Kennedy and Lyndon Johnson Administrations at a sub-cabinet level. He has presented 28 oral arguments in the Supreme Court. He has litigated some of the most important religious-liberty cases before the Supreme Court and lower federal and state courts. These include battling for the right to wear a yarmulke together with a military uniform, displaying Chanukah menorahs in front of city halls and in state capitols, and requiring government and private employers to accommodate Sabbath observance.

From Generation to Generation: An Introduction to Jewish Genealogy

Seasoned genealogists will give a thorough introduction to tracing your Jewish family history. Crucial resources and key tools to enhance your Jewish genealogy project will be provided. Learn how to enrich your personal stories and then share your work in class. Class size limited to 20 students. Both Leisure World residents and the general public are welcome to attend.

Prerequisite: Basic computer skills; ability to access to the internet.

Instructors: Sheila Wexler and Mary-Jane Roth, President and Vice President, Jewish Genealogical Society of Greater Washington.

Thursday, January 9, 16, 23, 30 [a 4-week series]; 10:30 am – Noon

Cost: \$40.00

COMMUNITY BULLETIN BOARD



JCCGW PROGRAMS

For more information about the JCCGW programs, contact Linda Wechsler at 301-348-3893 or lwechsler@benderjccgw.org

HAR TZEON AGUDATH ACHIM

1840 University Boulevard, Silver Spring, Maryland. Each Thursday there is a day-long program, including lunch. Lunch is at noon and the program starts at 1:00 pm.

- November 7 - Adrienne Suson: "Rhythm and Ruach"
November 14 - Leo and Friends: "An Afternoon of Song"

YOUNG ISRAEL SHOMRAI EMUNAH

1132 Arcola Avenue, Kemp Mill, Silver Spring, MD. Programs are held on Wednesdays.

- November 6 - Dr. Alan Breitler: "Great Scientist Series"
November 20 - "History of the Jews", Pt 4 PBS DVD

TIKVAT ISRAEL CONGREGATION

A Conservative Egalitarian Synagogue
2200 Baltimore Rd., Rockville
Rabbi Marc Israel- www.tikvatisrael.org
Cantor Rochelle Helzner

Have a need to say Kaddish?

Evening Services Sunday - Thursday 7:30 pm. and Friday Kabbalat Shabbat 6:30 pm.

Morning Services Sunday 9:00 am Thursday 6:45 am, Friday 8:00 am and Shabbat morning 9:30 am. We look forward to seeing you. For information about the minyanim, call the office @ 301-762-7338 or Ted (JRLW member) @ 301- 929-1542.

SHAARE TEFILA SYNAGOGUE

16620 Georgia Avenue, Olney
A Conservative Egalitarian Congregation
Rabbi Jonah Layman (www.shaaretefila.org).

We are here for you if you wish to attend our daily religious services or observe a Yahrzeit and say Kaddish: Mornings (Sunday at 8:45 am, Monday and Thursday at 8:00 am) and Evenings (Sunday-Thursday at 7:30 pm). On the fourth Saturday morning of each month we provide sign language translation for religious service attendees

B'NAI SHALOM OF OLNEY

A Conservative Egalitarian Synagogue
18401 Burtfield Drive, Olney, MD 20832
Rabbi Scott Hoffman
rabbihoffman@b'naishalom.org
www.bnaishalomofolney.org

Office Telephone: 301-774-0879

Services:
Mon - Fri: 7:30 pm
Fri: 6:45 am; Sun: 9:00 am
Sat: 9:15 am



TORAH and PRAYER BOOK FUNDS

Individuals can be honored and loved ones memorialized with a contribution to the JRLW Torah or Prayer Book Fund for a minimum donation of \$25.00.

PRAYER BOOK FUND

If you would like to make a donation in honor of or in memory of someone in a Reform prayer book, Conservative Prayer book or a Chumash (Bible), please stipulate which one in your request to Janet Lazar. Her address is 15311 Beaverbrook Ct Apt 1B, Silver Spring, MD 20906. If you have questions, you may call her at 301-661-7205.

Marcia & Monroe Elbrand donated a Prayer Book in memory of Shirley Kirschenbaum's sister.

Shirley and Jerry Gordon donated a Reform Prayer Book in memory of Carolyn Lee Gross



TORAH FUND

For contributions to the Torah Maintenance Fund, send your check, made out to JRLW, to Carol Wendkos, 14805 Pennfield Circle, #212, Silver Spring, MD 20906.

Anita Sperling in memory of her brothers Bernie and Larry Sperling.



NEW MEMBERS

We welcome new members to Jewish Residents of Leisure World. We hope you take advantage of everything JRLW has to offer you.

Max & Susan Bronstein
2925 Birchtree Lane
Silver Spring MD 20906-3033

Maurice & Charlotte Potosky
23505 Beret Lane
Silver Spring MD 20906

Renie Freeman
3522 Chiswick Court, Unit 37D
Silver Spring MD 20906

Joel Shulman
13108 Parkland Drive
Rockville MD 20853-3365

Esther Cellini
3330 N. Leisure World Blvd. # 430
Silver Spring MD 20906

Eileen Smith
14203 Castaway Drive
Rockville, MD 20853-2629

Stan Ratner
5225 Pooks Hill Road, Apt. A28N
Bethesda, MD 20814

Dorothy Lloyd
15320 Pine Orchard Drive # 1F
Silver Spring MD 20906

Barbara Berger
2901 S. Leisure World Blvd. # 131
Silver Spring MD 20906

Harvey Kaplan
14536 Barkwood Drive
Rockville MD 20853-2318

Lois Thomas
3253 S. Leisure World Blvd
Silver Spring MD 20906

Rita Newman
3729 Glen Eagles Drive
Silver Spring MD 20906

Gerry and Kathie Cole
3100 N. Leisure World Blvd. #1026
Silver Spring MD 20906

NEW LIFETIME MEMBER

Irene Shaulis
3210 N. Leisure World Blvd. # 515
Silver Spring MD 20906

KRISTALLNACHT OBSERVANCE

Fred Firnbacher

JRLW will observe the 80th Anniversary of Kristallnacht on Sunday, November 10, 2019, at 7:30 pm, in the Activities Room of Clubhouse II.

People ask, “**What is Kristallnacht?**” Translated into English, it means Crystal Night. Others refer to this horrific night as the Night of Broken Glass. Here is how it came about.

In November 1938, a 17-year-old Jew named Herschel Grynszpan, living in Paris, received news that his family had been deported from their home in Germany to the Polish border. There they were stranded and mistreated. An enraged Herschel went to the German Embassy and shot a diplomat named Ernst Von Rath. On November 9, Von Rath died. The Nazi propaganda chief, Josef Goebbels, saw the killing as an opportunity to take the persecution of the Jews to another level. With Hitler’s assent, Goebbels called for actions against Jews to express the anger of the German people. Within hours, Nazi Stormtroopers were rampaging through almost every town and village in Germany and Austria. Synagogues were desecrated and many were set afire by the Nazis. Jewish businesses and homes were broken into and were plundered. Most Jewish males were arrested and sent to concentration camps. Some were killed. Because broken glass was everywhere, the term “Night of Broken Glass” was coined.

With this action, the Jews realized that there was no more future for them in Germany. Many refer to this as the beginning of the Holocaust.



This program is sponsored by Jewish Residents of Leisure World and is free of charge. All Leisure World residents are invited to attend.



REMINDER: IF YOU WISH TO BE ADDED
TO OUR LIST OF E-MAIL NOTICES,
PLEASE SEND YOUR E-MAIL ADDRESS TO
bernifc@juno.com.

THE E-MAILS ARE SENT OUT FOR
IMPORTANT REMINDERS OR NOTICES,
ONLY. WE DO NOT SELL THE LIST.

HADASSAH NEWS

Barbara Eisen

On Wednesday, November 13, at 2 pm, in Clubhouse II, Hadassah will hold a fashion show and boutique by TaylorMarie's Apparel. The clothes will be modeled by our members and there will be an opportunity to look through the racks of clothes and buy items of all sizes. In addition, our special guest, Joanne Goldstein, will speak on "Israeli Fashion." Light refreshments will be available. The cost is \$10.00 to benefit Hadassah programs. Pay at the door by cash or check payable to Hadassah. Please RSVP to either Bobbi Gorban 301-838-4336 or bprem@aol.com or Judy Rumerman 301-680-0850 or judyrumerman@gmail.com if you plan on attending. See the latest and greatest fall fashions and come ready to try on and shop!

"Are there love stories in the Torah?" A chance to hear different views on this topic will be offered on Monday, November 18, at 1:30 pm, in Clubhouse I, at the Hadassah Judaic Study Group meeting. The program is free and open to all. The focused story will come from Genesis 24, where Isaac marries Rebecca, and the sages write about love, weddings and whether men hope to find wives who remind them of their mother's best qualities. Discussion leaders will be Marcia Elbrand and Naomi Kline, and attendees will have the opportunity to pair up and tackle a discussion question. For additional information, email Marcia Elbrand at marciaelbr@gmail.com.

Hadassah will continue its socks and scarfs sale at its November and December meetings. Fall and winter are here, so it's time to protect your feet, hands, neck and shoulders from the chill. Hadassah is selling novelty socks, gloves, scarfs and ponchos. All items will be available at the meetings. Buy something for yourself or for friends and relatives. All proceeds fund research at Hadassah hospitals.

Elaine Schenberg and Jan Bloom sell Hadassah greeting cards. The prices are \$3 each for one to three cards and \$2.50 each for four or more cards. Cards are displayed and sold at every Hadassah meeting. Please call Elaine, 301-598-0079, or Jan, 301-593-7720, to buy cards between meetings.

Larelda Gruber, available at 301-598-5922, is chair of Youth Aliyah/Children at Risk. This project helps disadvantaged children in Israel. The goal is to create a circle of \$1000, made by individual contributions of \$40. Send your donations to Larelda at 3200 N. Leisure World Blvd. #201, Silver Spring, MD 20906. Hadassah sponsors many activities to further the worthwhile projects it supports in medical, educational, and social programs in Israel and the U.S. If interested in knowing more about Hadassah, contact one of its membership vice presidents: Lois Fields at 301-585-9804 or e-mail at loisfields2@earthlink.net or Natalie Rosen at 301-279-5640 or bnrosen@comcast.net

MEMBERSHIP COMMITTEE

Judy Frumkin

After all the busy times of the holidays, we hope you now have time to relax and to breathe a little! During all our services, we hope you were able to connect with current and new members. It was very exciting to see so many people at our services and to greet them. To all our new members, we say welcome to the Jewish community of Leisure World. And to all our current members, we're so glad that you are with us to take advantage of all the opportunities we offer.

This newsletter will come out right before our Malava Malka. How lucky we are to have a creative program chair and committee that are trying new ideas for us! And there will be others provided by all the different committees of our organization.

To our new members – please reserve the date of January 5 during the day. We know that it seems like a long way off but it will come quickly! We're all aware of how fast time flies by. That will be our welcoming event for you! All new members and new Life members to JRLW will be receiving an invitation to a get together where we can share our exciting future events and where we can get to know each other better.

Again, thank you for being part of the Jewish voice of Leisure World. If you haven't yet become a member

MEMBERSHIP COMMITTEE

CONTINUED FROM PAGE 13

or if you know someone who would be interested in membership materials, please do not hesitate to call us.

B'shalom,

Judy Frumkin – judyfrumkin@gmail.com –
443-858-2894

Leah Weisman – leaheweisman@gmail.com –
301-288-4267

Ed note: This month we welcome Pau Bessel as a contributor to our newsletter. Paul's knowledge of all things political is vast. This is the first of three articles about the Israeli elections. Welcome, Paul.

THE ABC'S OF ISRAELI POLITICS

Paul Bessel

Israeli politics are very complicated. I will try in this and future articles to explain the basics.

Israel does not have a written Constitution like the U.S., but it has 11 "Basic Laws." One deals with the Knesset, the Israeli parliament. Unlike the U.S. and U.K., Israel only has one house in its legislature. There are 120 seats.

You don't vote for people in Israel. You vote for a party, and the parties name people to serve in the Knesset. Whichever party can put together a majority coalition of 61 becomes the governing party, and the largest other party is the "opposition."

Since 1996, Benjamin Netanyahu has been the dominant figure in Israeli politics. He was Prime Minister from 1996 through 1999, and again from 2009 to the present. He is the longest-serving Prime Minister in Israel's history. He is the head of the Likud party, which has been dominant all that time.

More to come in my next article.



RECIPE CORNER

EASY TUNA PATTIES

2 eggs

2 tsp lemon juice

½ cup Italian-seasoned bread crumbs

3 (5 ounce) – cans tuna, drained

½ cup diced onion

Pinch black pepper

¼ cp vegetable oil



Beat eggs, add lemon juice, pepper and bread crumbs. Fold in tuna and onion. Mix well. Form into 9 patties.

Heat oil in skillet over medium heat. Fry patties until golden brown, about 10 minutes per side. Drain and serve.

ON THE LIGHTER SIDE



Sunny Levin

A young child walked up to her mother and stared at her hair. As mother was scrubbing the dishes, the girl cleared her throat and sweetly asked; "Why do you have some grey strands in your hair?"

The mother paused and looked at her daughter. "Every time you disobey, I get one strand of grey hair. If you want me to stay pretty, you better obey."

The mother quickly returned to her task of washing dishes. The little girl stood there thinking. She cleared her throat again. "Mother?" She sweetly asked again.

"Yes?" Her Mother replied.

"Why is Grandma's hair all grey?"



WE GET LETTERS!!



To our friends at JRLW:

For any of you who may not know, my wife Cheryl and I have each had medical issues that will take us into 2020. Cheryl is undergoing chemotherapy and I am being treated for a bone fracture in my left ankle. Each of us is taking things day by day and some days are better than others. We do want to give a heartfelt “thank you” to all of you who have brought us food, signed up on Meal Train to bring us food, provided rides, made donations to JRLW, sent cards and called us. We are overwhelmed by the support and want you to know that your kindness and compassion will not be forgotten.

Mike Kravitz

Attention Snowbirds:

If you will be going away for the winter, please let me know when you will be leaving and then remember to let me know when you will be coming back to Leisure World.

This will enable me to change your address in our files so you won't miss a copy of the JRLW Newsletter. You can call me at 301-288-4678 or send an email to:

marshabernstein4@gmail.com.

Please Note: Even if you change your address with the post office, the Newsletters will not be forwarded because they are not sent via first class mail. That's why it's important you give your change of address to us directly.

Marsha Bernstein, Treasurer, JRLW

JRLW/JCC MOVIE

Movie Matinee: “Working Woman”

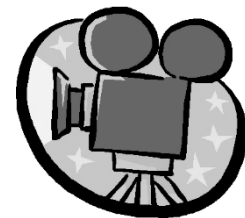
**When: TUESDAY, NOVEMBER 26,
1:30 – 3:30 pm**

Where: Clubhouse II Auditorium

Cost: \$8; \$10/Day Of | RSVP 11/19

Israel | Drama | 2018 | 93 minutes | Hebrew, English subtitles

With her husband's restaurant business in jeopardy, a mother of three gets a job as assistant to a powerful realtor and must fight back against his sexual harassment. This is an all too timely film in the “Me Too” era.
DISCLAIMER: Contains occasional sexual content.



In October, we sadly observed the one year anniversary of the terrible shootings in the Pittsburgh Tree of Life Synagogue. We remember, with sorrow, those people killed in that horrific event. In their memory, we pledge to combat antsemitism wherever and whenever it occurs. We pledge to continue our battle to end gun violence now. May those who mourn these persons be comforted.

WE WILL NOT FORGET.

Joyce Feinberg, 75
Richard Gottfried, 65
Rose Mallinger, 97
Jerry Rabinowitz, 66
Cecil Rosenthal, 59
David Rosenthal, 54
Bernice Simon, 84
Sylvan Simon, 86
Daniel Stein, 71
Melvin Wax, 88
Irving Younger, 69





**Power Lift
Recliners**



Scoters



877.224.2294

WWW.YOURSCOOTERSHOP.COM

Sales, Service and Rentals

**All new equipment comes with a FREE
maintenance program. (Call for details)**



**Lightweight
Rollators**



**Portable Power
Mobility**



You can have it all at Ring House.

1801 East Jefferson Street
Rockville, MD 20852

Luxury Independent Living

Award-Winning Art and
Music Programs

Active Senior Lifestyle

Fitness Center

On-site Physicians and
Medical Center

Maintenance-Free Living

Call us for a tour and discover
your next home.

301-816-5012

smithlifecommunities.org



Charles E. Smith
LIFE COMMUNITIES

The Dental Office At Leisure World



**Available for
Urgent Care**

For The Community

For over 40 years we have been an integral and independent member of the Leisure World medical community.

Dr. Carmen DeVries

Conveniently Located at
Leisure World Medical Center

3305 N. Leisure World Blvd
Silver Spring, MD 20906

301-598-1015

leisureworlddental.com



Health Focused

Our conservative practice philosophy focuses on prevention and maintaining health and function. We provide care exclusively to older adults in a warm and caring environment.

*A soul never dies, it brings us together
again and again,
at the Garden of Remembrance.*



**Take control of your destiny with expert guidance
at the Garden of Remembrance. The gift of pre-planning
will give you and your family peace of mind.**

Call our Help Line today at 301.428.3000,
or visit www.gardenofremembrance.org.



Garden of Remembrance

GAN ZIKARON MEMORIAL PARK

**19 YEARS OF CARING SERVICE AND DEDICATED SUPPORT TO THE
JEWISH COMMUNITY OF GREATER WASHINGTON**

Partner Agency of
The Jewish Federation
OF GREATER WASHINGTON





Feel right at *home* at Homecrest House



**We offer two Affordable Senior Independent Living
Communities with Options:**

***Stein and Moskowitz
Buildings:***

- . Bright and spacious apartments
- . Meal Plan
- . Full Activities Calendar
- . Resident Trips
- . Salon & Convenience Store
- . Computer Lab & Library
- . Fitness Center & On-site laundry rooms
- . Lounge and TV Room

***Edwards Building with
Services:***

- . Daily Meals
- . Weekly Bathing Assistance
- . Weekly Laundry & Housekeeping
- . Optional Medication Administration
- . On-site 24-Hour Staff
- . Emergency Alert System
- . Walk-in showers with grab rails
- . Activities & Trips

**You MAY be eligible for RENT
& SERVICE SUBSIDIES**

Call us today for a tour: 301-244-3579!

*Email: marketing@homecresthouse.org | Near Leisure World in Aspen Hill, RT. 200,
and Glenmont Metro on Bus Route 26*

14508 Homecrest Road, Silver Spring, MD 20906 | Take a video tour and access an application
on our website @ www.homecresthouse.org | TTY MD Relay 7-1-1



Leisure World trusts **Family & Nursing Care**



As a premier resource for in-home care services, Family & Nursing Care helps families rest easy, knowing their loved ones are well supported. From that first cup of coffee in the morning to a sacred bedtime ritual to an unexpected need in the middle of the night, **we are here for you.**

To learn more, come meet **Kelly** and **Jeff** in our office in the Leisure World Medical Center.



3305 N. Leisure World Blvd. familynursingcare.com (301) 588-8200

We Provide Compassionate Urology Care for the Residents of Leisure World.

Chesapeake Urology is conveniently located at 3801 International Drive in Silver Spring, just around the corner from Leisure World.



Richard A. Kurnot, M.D.
General Urology for Men and Women



Cheryl Shih, M.D.
General Urology for Men and Women:
English, Mandarin Chinese, Spanish



Vik Uberoi, M.D.
General Urology for Men and Women: English, Hindi, Spanish



Anup A. Vora, M.D.
General Urology for Men and Women: English, Hindi, Gujarati, Spanish

Chesapeake UROLOGY

The most personal care for life's most personal issues.

301-598-9717

chesapeakeurology.com

Prostate, Bladder and Kidney Cancers and Conditions • Kidney Stones • Erectile Dysfunction • Urinary Tract Infections • Pelvic Pain • Bladder Control Conditions • Enlarged Prostate
Female Urinary Incontinence • Pelvic Organ Prolapse • IC/Painful Bladder • Pelvic Pain



BEDFORD COURT

MONOGRAM COLLECTION BY SUNRISE

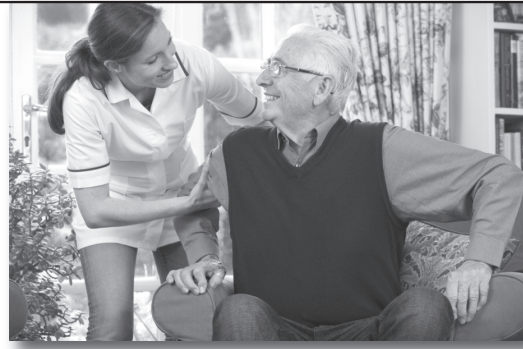
Bedford Court provides the Continuum of Care: Independent Living, Independent Living with Services, Assisted Living, Skilled Nursing & Rehab. We ranked "Highest in Customer Satisfaction among Senior Living Communities" by J.D. Power in their first-ever 2018 Senior Living Satisfaction Study.

**Independent Living 1 bedroom apartments available to reserve now.
Taking priority waitlist deposits for 2 bedrooms.
Limited availability in Assisted Living.
Call us for more information at 301-598-2900**



3701 International Drive. Silver Spring, MD 20906

The Smart Choice for Home Care.



Families that value the highest standards of care, ease of use and reputation, choose Capital City Nurses every time. Whether care is needed for just a few hours or around the clock we can design a care plan to match your needs.

- Expert matchmaking
- Help with Personal Care
- Companionship
- Transportation to Doctors' visits and appointments
- Medication reminders
- Meal preparation, housekeeping and laundry
- Care supervised by Registered Nurses



Flexible hours – Consistent caregivers – Simple set up – Available 24 hours a day • License: MD RSA #399

www.capitalcitynurses.com • 301.652.4344

ASSISTED LIVING – MEMORY SUPPORT

SIMPLY DIFFERENT

BECAUSE WHAT SURROUNDS YOU
REALLY MATTERS.

Partnering with national leaders in the field, we've set a new benchmark in memory support. Creatively designed programs stimulate memory and build independence and self-esteem. Our community hums with a zest for living shared by residents and staff alike—in independent living, assisted living, memory support, rehabilitative care and nursing care.




BROOKE GROVE
RETIREMENT VILLAGE

18100 Slade School Road, Sandy Spring, MD 20860
301-260-2320 or 301-924-2811 • www.bgf.org

RESIDENTIAL COTTAGES ASSISTED LIVING SKILLED NURSING CARE
MEMORY SUPPORT REHABILITATION



TORCHINSKY



HEBREW FUNERAL HOME

The ONLY Independent Jewish Family Owned and
Operated Funeral Home in the Greater
Washington Metropolitan Area

Joyce E. Torchinsky, M.S.Ed.

Licensed Funeral Director DC/MD/VA

***“Helping you make plans
120 years in advance...”***

202-541-1001 □ 301-495-3395 □ 1-800-500-5401

254 Carroll St., NW, Washington, DC 20012

Diagonally across from the Takoma Metro-Red Line



Love and Remembrance Forever

Come visit, and enjoy the many trees, (500+!) gardens, shrubs, art works, and other features that enhance the beauty and meaning of Judean. Our memorial counselors will help you make the right choices.

DID YOU KNOW? JRLW members receive substantial discounts on burial sites, goods and services? Contact (JRLW) Lyle Wolinsky (301-325-2600) to receive your *Savings Voucher!*



“Abraham” is one of many art works created by artist P. Ratner for Judean

☆ **JUDEAN MEMORIAL GARDENS** ☆

16225 BATCHELLORS FOREST ROAD
OLNEY MD 20832 | 301-384-1000 | www.judeangardens.com

JOIN US FOR SHABBAT AND STAY FOR DINNER

EVERY FRIDAY AT ASPENWOOD

From weekly Shabbat services, to Lifestyle360 activities focused on spirituality, we proudly celebrate the important role faith plays in our lives.

We're saving a seat at our table for you.



CALL TODAY FOR A SHABBAT RESERVATION.

**ASPENWOOD
SENIOR LIVING COMMUNITY**



14400 Homecrest Road • Silver Spring, MD 20906
301-598-6424
www.AspenwoodSeniorLiving.com

INDEPENDENT LIVING • INDEPENDENCE PLUS
ASSISTED LIVING

©2016 Five Star Senior Living






Jewish YOUR Way!

Wendy Shore Gonzales, Cantorial Soloist

Life Cycle Events including:
Weddings, Baby Namings, B'nai Mitzvot, Funerals,
Unveilings, Consecration of your home, etc.

Bar/Bat Mitzvah Training
Holiday Celebrations

*Whatever the occasion, I will work with you
to create a memory that will honor you
and your family.*

Call 301-938-4922 or
Email Wendy: awdmgonzales@gmail.com



Hard Hitting. Community Oriented. Substantive. Cultured.

Washington Jewish Week

An essential part of Jewish Life in the Greater Washington area

washingtonjewishweek.com 301.230.2222

RINO MADDALENA
Associate Broker

301.717.1075 Cell
240.669.2225 Office
Rino@LNF.com
www.RinoMaddalena.com

LONG & FOSTER REAL ESTATE | CHRISTIE'S INTERNATIONAL REAL ESTATE

*Great tasting and flavorful
A favorite of
Leisure World Residents*

**Corned Beef Sandwiches,
Pastrami and more!**



**SAGEL
BLOOMFIELD
DANZANSKY GOLDBERG
FUNERAL CARE INC**

**Advance Planning/
Pre-Payment of
Funeral and Memorial -
'A gift for your family'
CALL TODAY
FOR YOUR FREE PLANNING GUIDE**

Licensed to practice mortuary science in Maryland

**We offer Special
Funeral Package
Plans for Jewish
Residents of
Leisure World**

MONUMENT DIVISION

Jewish Residents of Leisure World
We sell, install, clean and restore bronze and upright granite memorials at any cemetery in the DMV area.
**Visit our NEW Memorial/Monument website
www.sbmonuments.com**

Make your appointment with one of our Monument Specialists

Larry Shor or **Al Bloomfield**
larry@sagelbloomfield.com al@sagelbloomfield.com

**WE ARE PLEASED TO OFFER YOU
\$100 OFF YOUR PRE-PAID PURCHASE**

301.340.1400

www.sagelbloomfield.com

sagelbloomfieldfunerals

1091 Rockville Pike | Rockville, MD 20852



Rachamim - Compassion

ALFREDHOUSE ASSISTED LIVING MEMORY CARE

Offering nine senior living communities specializing in assisted living, memory care, mental health support and more.

**Call Ken Silverstein To
Schedule Your Tour**

www.alfredhouse.com

(301) 260-2080

NOVEMBER

Sun	Mon	Tue	Wed	Thu	Fri	Sat
					1 °Class/Ira Weiss CH I 10 am °JRLW Cons. Shabbat Svc Interfaith Chapel 7:30 pm 5:50	2 °Study w/ Rabbi Samber CH II 9:15 am °MALAVA MALKA CH II 6 pm
3 DAYLIGHT SAVING TIME ENDS	4 JRLW Board CH II 7:00 pm	5 JRLW Board CH II 7:00 pm	6 •JWV Bd. CH I CH I 11:00 am °Na'Amat Mtg CH I 11:30 am •Hadassah Bd. CH I 7:30 pm	7	8 Class/Ira Weiss CH I 10 am 4:42	9 JRLW Shabbat Service CH II 9:15 am
10 °JWV Brunch CH I 10 am °KRISTALLNACHT Observance CH II 7:30pm	11	12	13 °JCC Concert CH I 1 pm °Hadassah Fashion Show CH II 2 pm	14	15 Class/Ira Weiss CH I 10 am 4:36	19 Study w/ Rabbi Samber CH II 9:15 am
17 JRLW BRUNCH CH I 10:00 am	18 °JCC Lecture CH I 10:30 am °Hadassah Study Grp CH I 1:30 pm	19 Na'Amat Bd. CH I 10:30 am	20	21	22 Study w/ Rabbi Samber CH II 9:15 am 4:32	23 Study w/ Rabbi Samber CH II 9:15 am
24	25 JRLW/CoA Movie CH II 1:30 pm	26 JRLW/CoA Movie CH II 1:30 pm	27 °Na'Amat Book Club 1:00 pm °Interfaith Thanksgiving Svc	28 THANKSGIVING	29 4:29	30 Study w/ Rabbi Samber CH II 9:15 am

2019

JEWISH RESIDENTS OF LEISURE WORLD



3700 ROSSMOOR BLVD.
SILVER SPRING, MD 20906

TIME CRITICAL
INFORMATION

ADDRESS SERVICE REQUESTED

NON PROFIT ORG
US POSTAGE
PAID
SUBURBAN, MD
PERMIT NO. 3275



WE GIVE THANKS